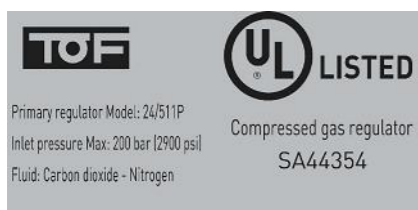
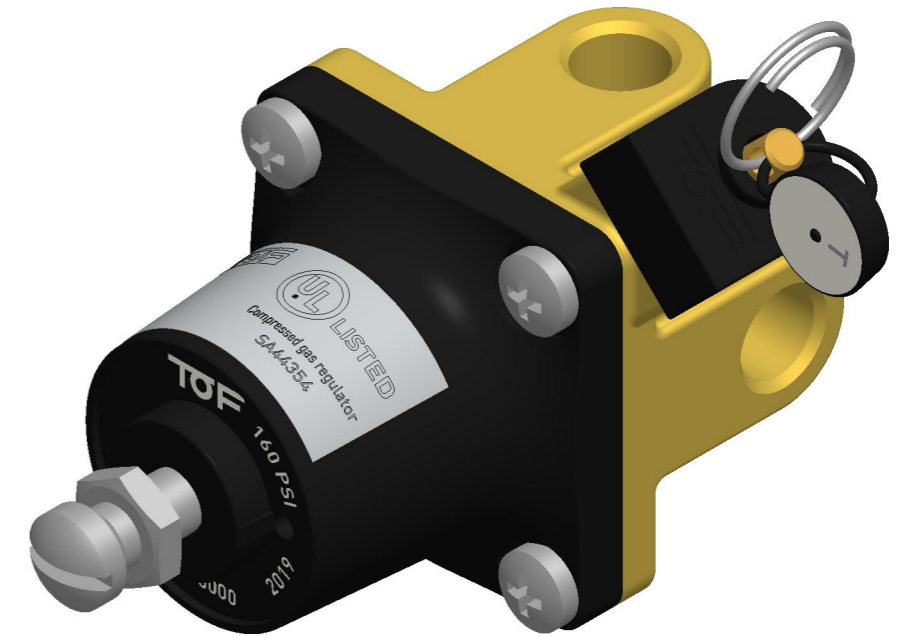
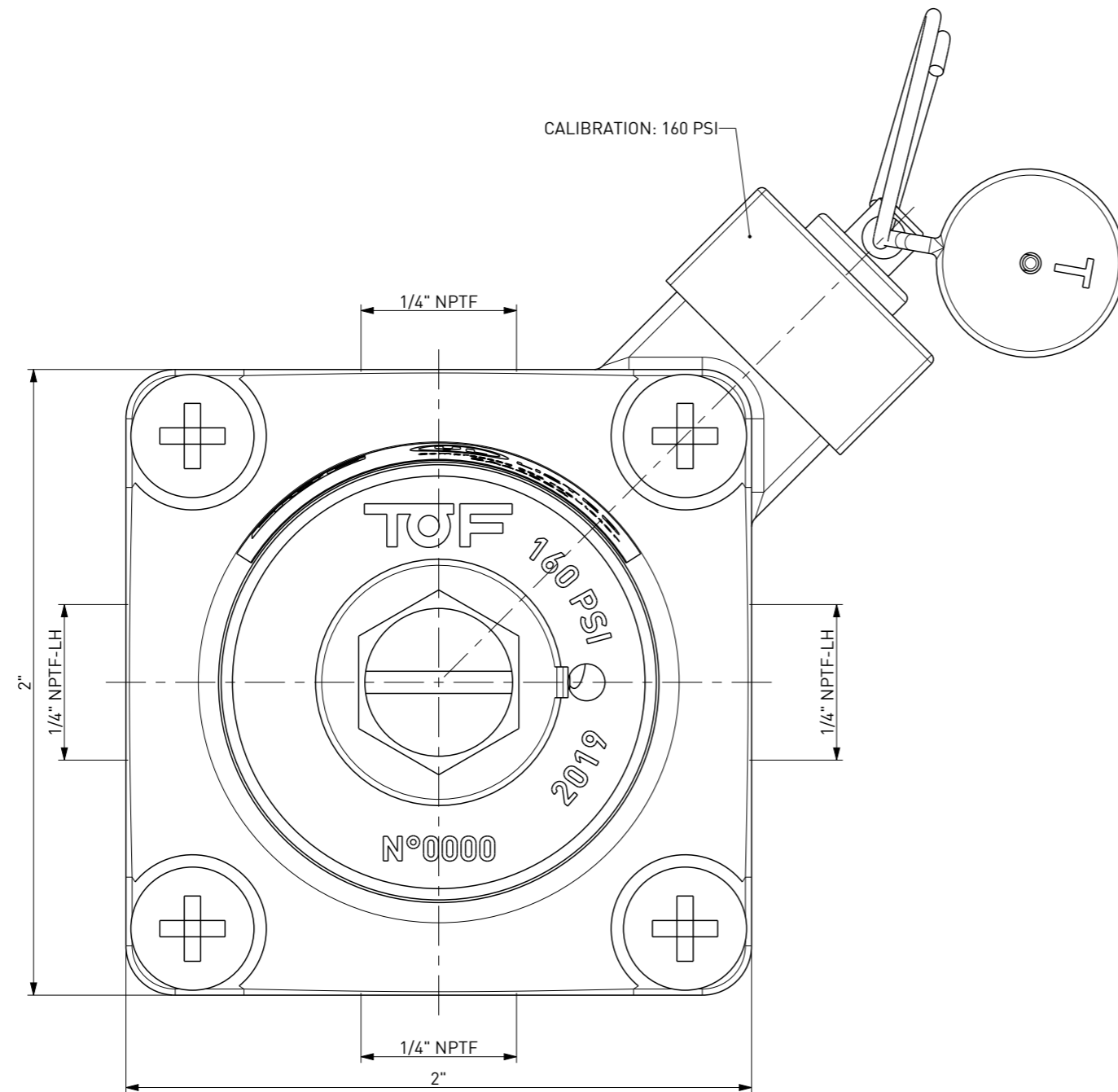



MAX PRESSURE REDUCING VALVE REGULATION= 160 PSI (11,03 BAR)
 SAFETY VALVE INITIAL RELIEF= 165 PSI (11,38 BAR)
 MAX OVERPRESSURE= +8%



FILE: 24_511P	PROPRIETARY DESIGN FOR ALL PURPOSES OF LAW		 ITALIAN MANUFACTURERS SINCE 1948		
ARCHIVE: //					
DEP.: MON-B	TOLLERANCES UNI EN ISO 22768-F	○ IMPORTANT QUOTES			
SCALE: 2:1	UNLESS WHERE DIFFERENTLY INDICATED	⑨ INDEX OF CHANGE			
MATERIAL: VARIOUS					
RULES:					
DIS.N°: 24/511P			GROUP		
- PRESSURE REGULATOR					
- PRESSURE REGULATOR BODY KIT - 160 PSI - 1/4" NPTF					
-					
Rev.	DATE	DESCRIPTION	DIS.	DEL.	RAW PIECE lb :
2	04-12-2019	UPDATE	BR	TD	FINISHED PIECE lb : 1,09
FIRST ISSUE: 15-07-2014					MOLD DESIGN:
NOTE:					FORMAT: A3 PAPER: 5